



The On Call Library for Washington State Practitioners

Annual Report
2017–2018

REVISED

Vision

To be the provider of choice of current, authoritative clinical and educational information resources to every licensed healthcare practitioner in Washington State.

Mission

HEALWA assures 24/7 online access to current authoritative clinical information and educational resources to eligible healthcare practitioners in Washington State. We do this in partnership with the Washington State Department of Health.

2019 Focus

- Disseminate information
- Form partnerships
- Educate stakeholders
- Facilitate behavior change
- Expand outreach to non-participating professions
- Strengthen connections to associations of participating professions
- Explore provision of expanded Continuing Education offerings
- Build newsletter visibility and frequency of publishing
- Increase outreach to medical librarians serving health professions practitioners and students to raise awareness of HEALWA

Staff

Tania Bardyn, MLIS, AHIP

Health Sciences Library Principal Investigator
University of Washington Health Sciences Library
Box 357155 Seattle, WA 98195

bardyn@uw.edu

Kerry Kirk

Web Specialist

klkirk@uw.edu

Jane Koh

Program Coordinator

janekoh1@uw.edu

Patricia Devine, MLS

Community Outreach Coordinator
University of Washington Health Sciences
Library
Box 357155 Seattle, WA 98195

devine@uw.edu

Adam Garrett

Assistant Director, Systems

garrett@uw.edu

Social Media

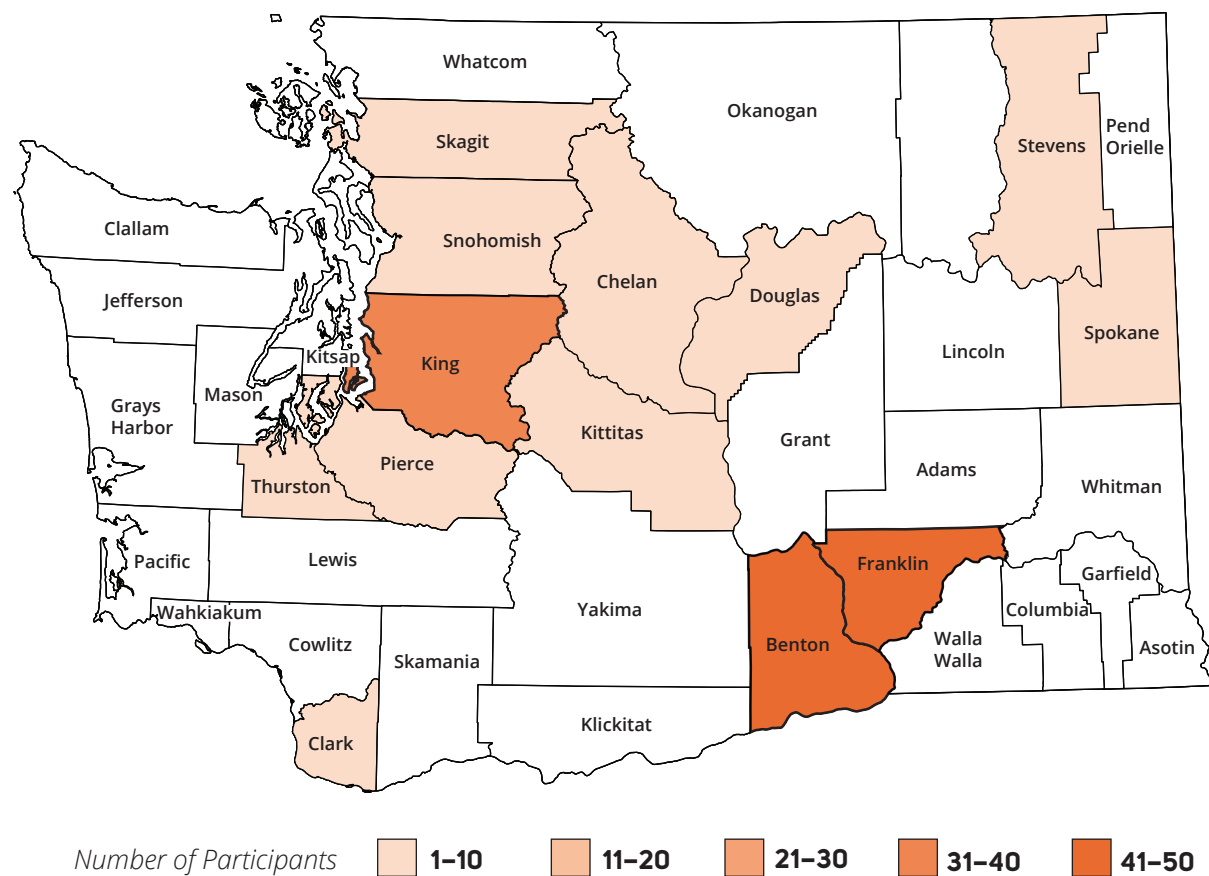
HEALWA will utilize social media to publicize the resources and information contained in the collection and interact with healthcare workers in Washington State by:

- Reaching out to eligible professions through their associations, members and lobbyists
- Posting relevant content
- Providing links to health news items and topics of current concern
- Connecting with organizations with health interests in Washington State

 facebook.com/HEALWA  twitter.com/healwa

Webinars and Workshops

MAY 1, 2017 – PRESENT



In collaboration with the National Network of Libraries of Medicine Pacific Northwest Region (NNLM PNR) and Washington State University (WSU) Spokane, HEALWA has been working to improve the knowledge base of health professionals in Eastern Washington. The effort has included working with health practitioners—especially nurses working in clinics, long-term care facilities, and schools in Eastern Washington. The aims of this program have been to:

- Enhance clinical decision-making and patient care for health practitioners
- Improve the quality of life of older Americans
- Prepare K-12 students for jobs in the future
- Increase National Library of Medicine, NNLM PNR, HEALWA, and WSU Spokane visibility
- Build capacity for sustaining these programs in rural and underserved areas

A medical librarian at WSU taught seven webinars designed to introduce participants to HEALWA and other resources to a total of 243 nurse attendees. Four in-person workshops were delivered to a total of 48 school nurses in Benton, Grant, and Chelan counties. HEALWA also exhibited at the School Nurse Organization of Washington (SNOW) Spring Conference in order to make one-on-one contacts with the target population. The online self-guided HEALWA tutorial developed in 2016 was updated and further promoted to all health practitioners interested in learning how to use HEALWA on their own schedules.

Free CNE Contact Hour

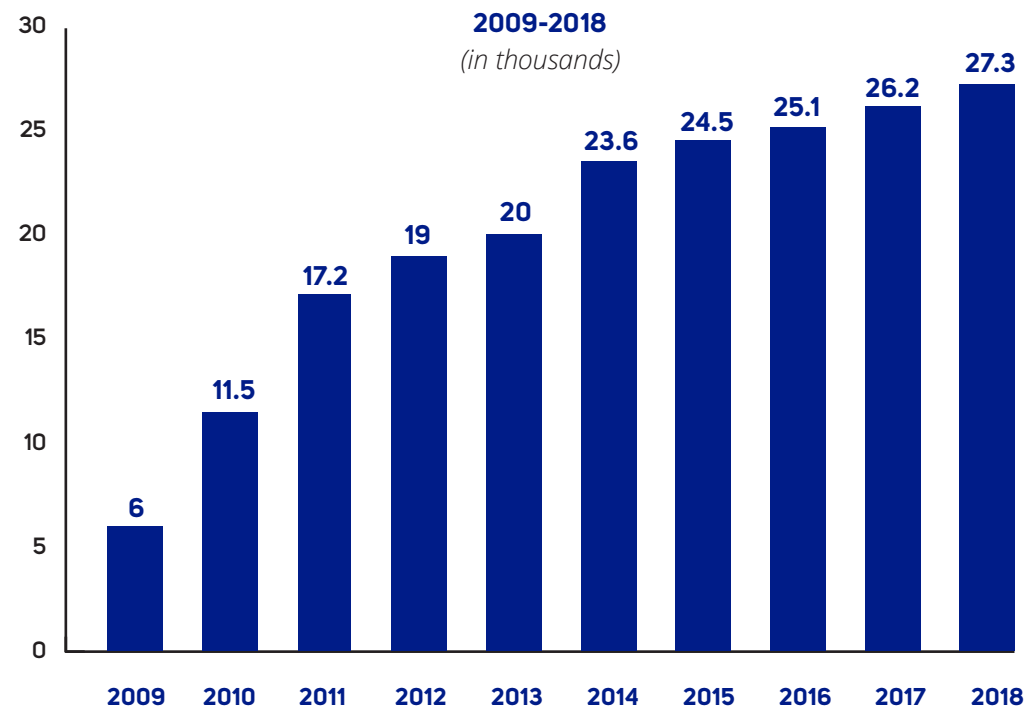
Nurses can now earn one free CNE contact hour just by learning about HEALWA. Webinars will be offered monthly beginning in January 2019. The webinars will demonstrate how to register for the HEALWA website and how to navigate the portal, and present basic information about the HEALWA collection. Registration is required. More information will be made available on the HEALWA website under News.

“This webinar is very helpful in learning the valuable resources available on this site, and it is definitely worth the extra money that HEALWA costs. Thank you.”

Registered Nurse, Pierce County



HEALWA Registered Users



As of Nov 1, 2018, 27,335 licensed healthcare providers in Washington state are registered HEALWA users. This represents 13.4% of total eligible users. Usage has increased over the last year with 1118 new registrations compared to that of Nov 1, 2017. The groups with the highest number of total users continue to be Registered Nurses and Licensed Practical Nurses, Physicians and Surgeons, followed by Massage Therapists. The group with the highest percentage of eligible users is once again Naturopathic Physicians with 52% registered to access HEALWA licensed resources.

Eligible and Registered Licensees

As of November 3, 2018

LICENSE HELD	NUMBER ELIGIBLE	NUMBER REGISTERED	PERCENT REGISTERED
Chiropractor	2706	363	13.4%
Dietitian	1992	384	19.3%
East Asian Medicine Practitioner	1631	382	23.4%
Licensed Practical Nurse	11,848	468	4.0%
Marriage and Family Therapist	1776	174	9.8%
Marriage and Family Therapist Associate	580	15	2.6%
Massage Therapist	14,145	982	6.9%
Mental Health Counselor	7345	856	11.7%
Midwife	182	75	41.2%
Naturopathic Physician	1466	762	52.0%
Nutritionist	262	39	14.9%
Occupational Therapist	3919	431	11.0%
Occupational Therapy Assistant	1200	60	5.0%
Optometrist	1757	211	12.0%
Osteopathic Physician	2454	234	9.5%
Osteopathic Physician Assistant	129	18	14.0%
Physician	30,050	3314	11.0%
Physician Assistant	3969	486	12.2%
Podiatric Physician	391	74	18.9%
Psychologist	3114	589	18.9%
Registered Nurse	103,564	16,754	16.2%
Social Worker	4647	501	10.8%
Clinical Social Work Associates	1927	37	1.9%
Speech Language Pathologist	3068	126	4.1%
TOTALS	204,122	27,335	13.4%



HEALWA Expenditures

November 1, 2017 – October 31, 2018

CATEGORY	DETAIL	TOTAL
HEALWA Staff Salaries and Benefits		\$ 187,860
Resources		\$ 2,565,701
	Electronic textbooks Evidence-based and reference databases Full-text journals	
Equipment and Supplies		\$ 1,307
Technology and Other Services		\$ 2,997
Marketing & Exhibits		\$ 2,429
Professional Development		\$ 3,546
Publicity		\$ 3,738
Total Expenditures		\$ 2,767,578
Funds received from DOH		\$ 3,097,388

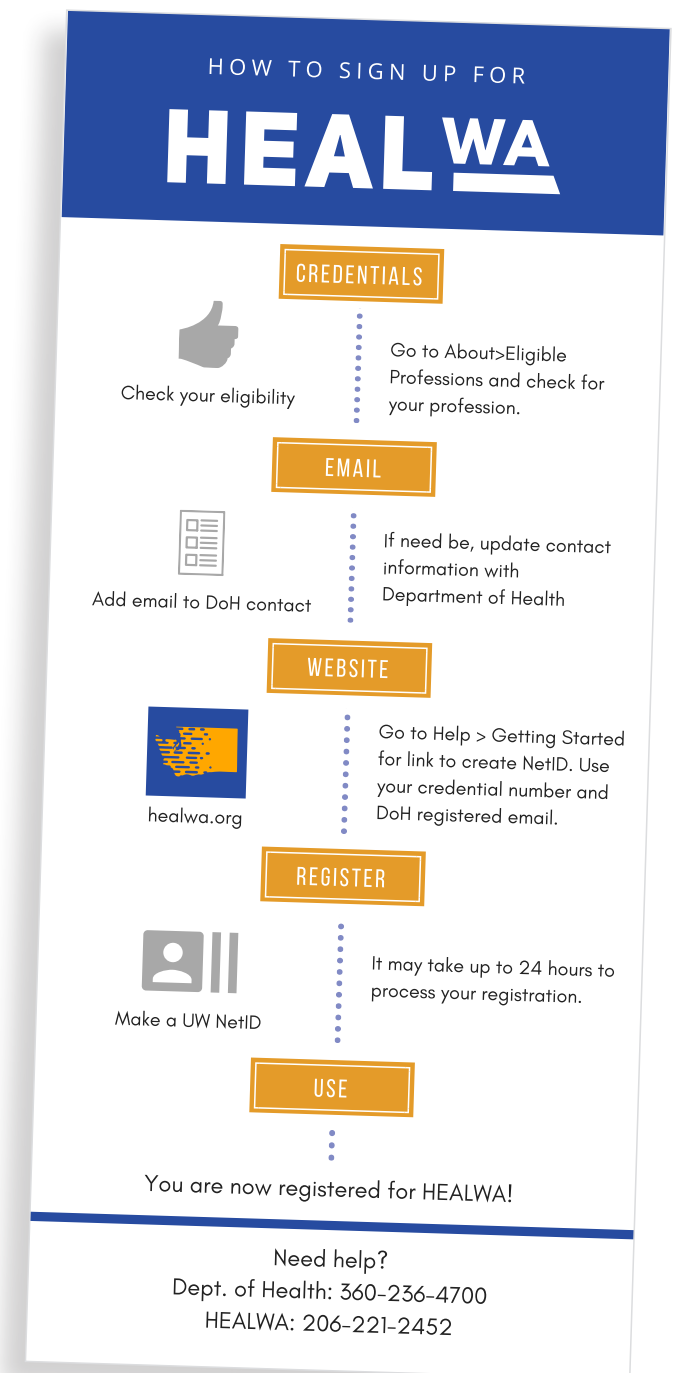
Salaries include:

1.0 FTE Librarian
0.90 Professional IT Staff
0.20 Classified Staff
0.10 FTE Principal Investigator



HEALWA Eligible Professions

Advanced Registered Nurse Practitioners
Chiropractors
Dietitians
East Asian Medicine Practitioners
Marriage & Family Therapists
Marriage & Family Therapy Associates
Licensed Practical Nurses
Massage Therapists
Mental Health Counselors
Midwives
Naturopathic Physicians
Nutritionists
Occupational Therapists
Occupational Therapy Assistants
Optometrists
Osteopathic Physicians
Osteopathic Physician Assistants
Physicians
Physician Assistants
Podiatric Physicians
Psychologists
Registered Nurses
Social Workers
Clinical Social Work Associates
Speech Language Pathologists



Suggested Resources by Profession

CHIROPRACTOR

Index to Chiropractic Literature

Chiropractic journals from 1985 to present.

DIETITIAN/NUTRIONIST

Dietary Supplement Label Database

Full label contents from a selection of dietary supplements marketed in the U.S.

Nutrition Care Manual

A therapeutic and professional practice manual which includes tools and calculators for diseases and conditions.

EAST ASIAN MEDICINE PRACTITIONER

CINAHL Complete

The world's most comprehensive sources of full-text nursing and allied health journals.

Natural Medicines

The most authoritative resource on dietary supplements, natural medicines, and complementary, alternative, and integrative therapies.

MASSAGE THERAPIST

Patient Education Reference Center

A comprehensive collection of evidence-based patient education handouts for clinicians to distribute at the point of care.

MENTAL HEALTH PROFESSIONAL

Child Welfare Information Gateway

Comprehensive information and resources to help protect children and strengthen families.

Cochrane Database of Systematic Reviews

Full-text of highly structured systematic reviews and protocols focusing on the effects of healthcare.

Joanna Briggs Library

A unique suite of information resources to help integrate evidence into your practice. Includes publications such as best practice information sheets, evidence summaries, and systematic reviews.

Substance Use Screening & Assessment Instruments Database

A database for helping clinicians and researchers find instruments for screening and assessment of substance use and substance use disorders.

MIDWIFE

Joanna Briggs Library

Informational resources for providers in integrating evidence into their practices.

LactMed

A peer-reviewed database of drugs to which breastfeeding mothers may be exposed.

NATUROPATHIC PHYSICIAN & PHYSICIAN ASSISTANT

National Center for Complementary and Alternative Medicine Health Topics A-Z

A database for NIH's complementary and alternative medicine agency.

OCCUPATIONAL THERAPIST, OCCUPATIONAL THERAPY ASSISTANT, SPEECH PATHOLOGIST

Rehabilitation & Sports Medicine Source

An index of sports medicine and rehabilitation journals since 1963, and includes full-text access to over 180 journals.

Rehabilitation Reference Center

An evidence-based clinical reference tool for use at the point of care.

OPTOMETRIST

American Optometric Association Clinical Practice Guidelines

A resource for evidence- and consensus-based clinical practice guidelines.

PHYSICIAN, PHYSICIAN ASSISTANT, NURSE PRACTITIONERS, OSTEOPATHIC PHYSICIAN & OSTEOPATHIC PHYSICIAN ASSISTANT

ClinicalKey

A clinical insight engine offering journals, ebooks, practice guidelines, drug information, CME materials, procedural videos, and patient handouts.

Cochrane Database of Systematic Reviews

A database with a focus on rigorous reviews and protocols of healthcare effects.

Dynamed Plus

An evidence-based clinical reference tool for use at the point of care.

MEDLINE Complete with Full Text

The largest companion to MEDLINE index and provides full-text for many popular medical journals.

PODIATRIC PHYSICIANS

Dynamed Plus

An evidence-based clinical reference tool for use at the point of care.

MEDLINE Complete with Full Text

The largest companion to MEDLINE index and provides full-text for many popular medical journals.

REGISTERED NURSE, LICENSED PRACTICAL NURSE

Davis' Drug Guide for Nurses

The latest coverage of over 5,000 trade and generic drugs, drug classes, IV therapy tips, and comprehensive tips for patient/family teaching and home care.

Nursing Reference Center

A hub for information about conditions and diseases, patient education resources, drug information, continuing education, lab & diagnoses detail, and best practice guidelines.

CINAHL Complete

The world's most comprehensive sources of full-text nursing and allied health journals.



The On Call Library for Washington State Practitioners

healwa.org



Follow us:



facebook.com/HEALWA



twitter.com/healwa

HEALTH SCIENCES LIBRARY • 1959 NE PACIFIC STREET, SEATTLE WA 98195

206-221-2452 • HEALWA@HEALWA.ORG